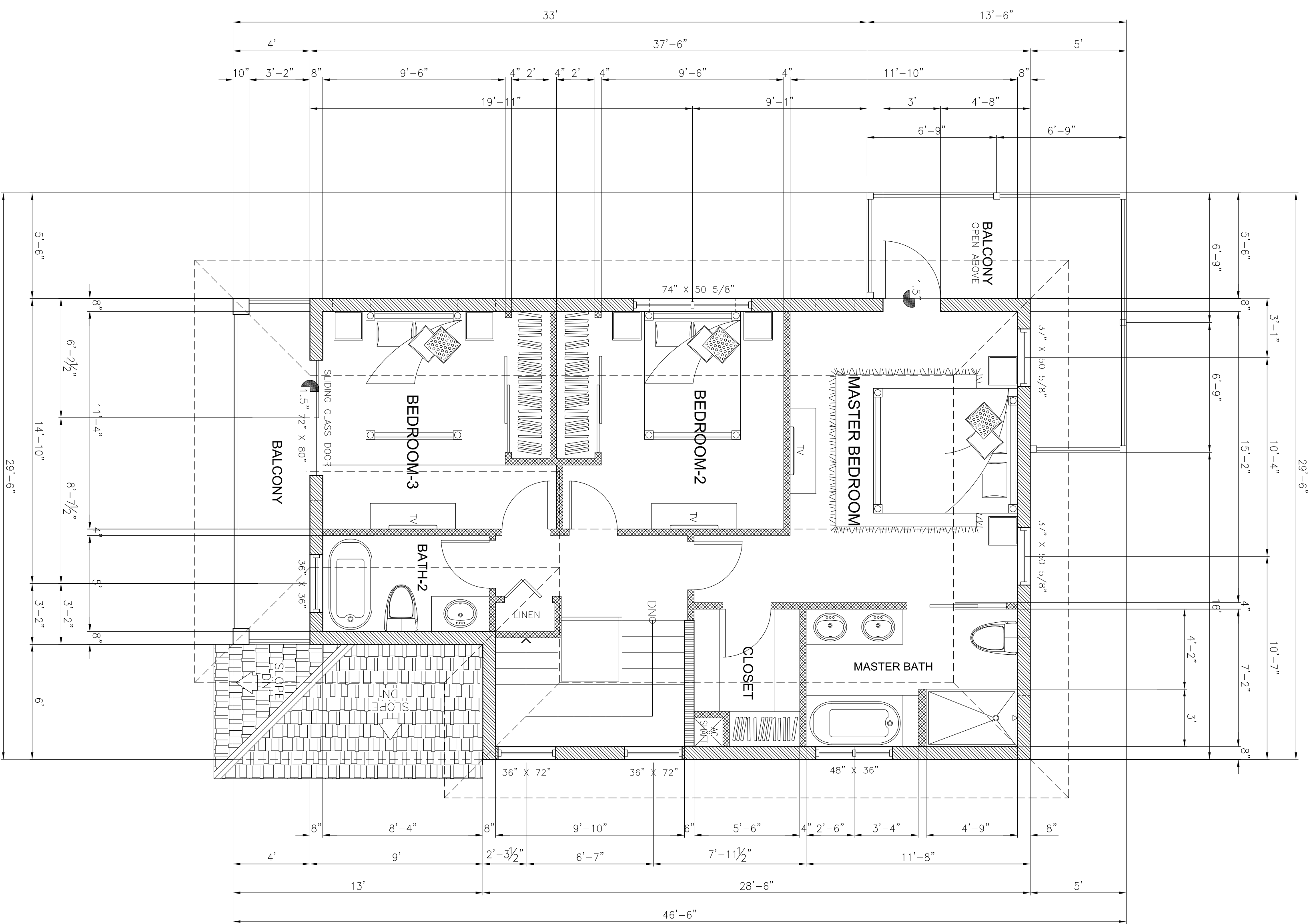


01 BUILDING #7 MODIFICATION
GROUND FLOOR PLAN
 1,110.25 SQ. FT.
 A2.3 SCALE 1/4"=1'-0"

- WALL LEGEND:**
- 8" CONCRETE BLOCK
 - 6" CONCRETE BLOCK
 - 2x6 STEEL STUD WALL
 - 2x4 WOOD STUD WALL

NOTE:
 ALL SLEEPING ROOM MUST HAVE ONE OPERABLE EXTERIOR WINDOW OR DOOR APPROVED FOR EMERGENCY EGRESS OR RESCUE AS PER SECTION 1005.4 C.I. BLDG. CODE. 3W/68TH DOOR OUT SWING OR 37TD/68TH SINGLE HUNG WINDOW EMERGENCY EGRESS.
 ALL GLASS & GLAZING @ HAZARDOUS AREAS SHOULD BE TEMPERED SAFETY GLASS AS PER SECTION 2405 OF C.I. BUILDING CODE. PROVIDE SAFETY GLAZING BY THE DOOR FOR FAMILY ROOM AREA AND MASTER BATH SHOWER WINDOW.



02 BUILDING #7 MODIFICATION
SECOND FLOOR PLAN
 918.00 SQ. FT.
 A2.3 SCALE 1/4"=1'-0"

CHECKED BY:
 ELIE KOZAILY

REVISIONS

DATE

BY:

NO.

DESCRIPTION

DATE

BY:

NO.

DESCRIPTION

DATE

BY:

NO.

DESCRIPTION

DATE

BY:

NO.

DESCRIPTION

DATE

BY:

NO.

DESCRIPTION

DATE

BY:

NO.

DESCRIPTION

DATE

BY:

NO.

DESCRIPTION

DATE

BY:

NO.

DESCRIPTION

DATE

BY:

NO.

DESCRIPTION

DATE

BY:

NO.

DESCRIPTION

DATE

BY:

NO.

DESCRIPTION

DATE

BY:

NO.

DESCRIPTION

DATE

BY:

NO.

DESCRIPTION

DATE

BY:

NO.

DESCRIPTION

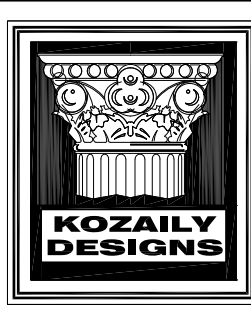
DATE

BY:

NO.

DESCRIPTION

DATE



KOZAILY DESIGNS
 ARCHITECTURE, INTERIOR DESIGN & PLANNING
 2ND FLOOR BLDG. B, KOZAILY CENTRE
 30 ASHGO ST., GT, GRAND CAYMAN, CAYMAN ISLANDS
 P.O. BOX 10647 KY1-1006
 TEL (345) 949-0410 FAX (345) 945-1923 email: info@kozaily.com

NOTE:
 01. THIS DRAWING IS EXCLUSIVE PROPERTY OF KOZAILY DESIGNS AND THE REPRODUCTION IN WHOLE OR IN PART IS PROHIBITED WITHOUT PRIOR WRITTEN CONSENT OF THE ARCHITECT.
 02. THE CONTRACTOR MUST CHECK AND VERIFY ALL LEVELS, DATUM AND DIMENSIONS AND REPORT ANY DISCREPANCIES OR OMISSIONS TO THE CONSULTANT BEFORE PROCEEDING WITH ANY WORK.
 03. DRAWINGS ARE NOT TO BE SCALED, AND TO BE READ IN CONJUNCTION WITH STRUCTURAL, ELECTRICAL, AND/OR ANY OTHER CONSULTANT'S DOCUMENTATION AS MAY BE APPLICABLE TO THE PROJECT.

THOMPSON RESIDENTIAL DEV'T.
 SHAMROCK RD., BEACH BAY, BODDEN TOWN
 BLOCK : 32C PARCEL : 256
 OCTOBER 2021 GRAND CAYMAN, CAYMAN ISLANDS BWI

SCALE: AS SHOWN
 DRAWN BY: JONATHAN

DWG. NO. **A2.3**